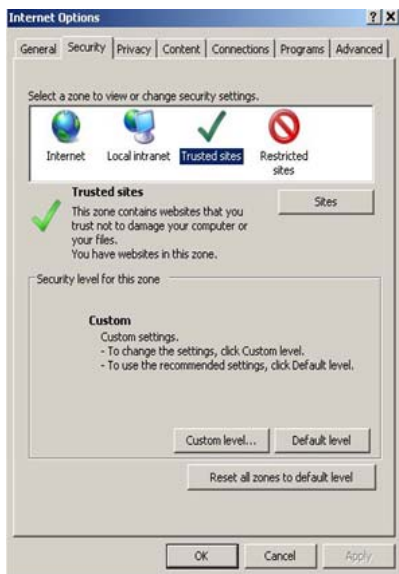


Making the Girlguiding UK website and Go! 'Trusted Sites'

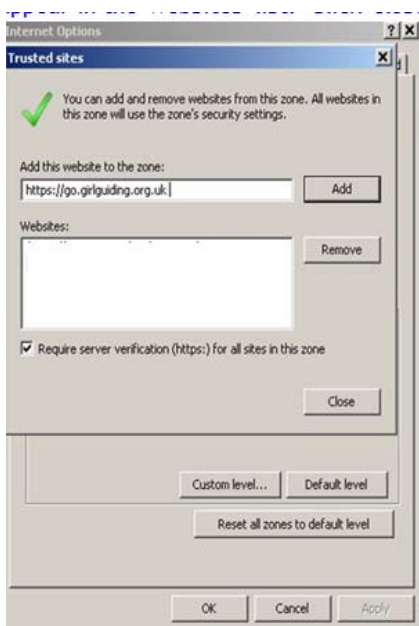
As password-protected websites, both the Members' Area and Go! have a security certificate. Some internet browsers have a high security setting, which means that they will not read the certificate or let you log in even if your details are correct.

To prevent this you need to register each site as a 'trusted site'. If you are using Internet Explorer please follow the instructions below.

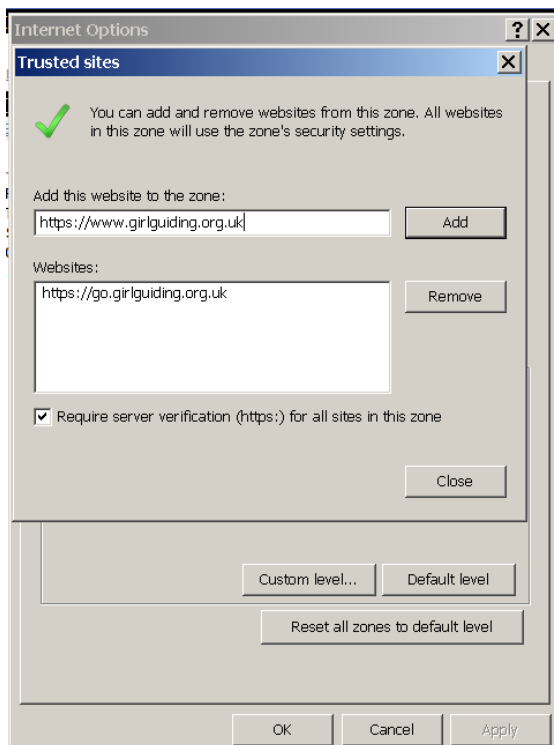
- 1) Click the 'Tools' menu.
- 2) Click 'Internet Options'.
- 3) The pop-up box shown below will appear. Select 'Security' then 'Trusted sites'.



- 4) The 'Sites' button will open the window shown below. Enter the Go! website (<https://go.girlguiding.org.uk>) in the 'Add this website to the zone' text box and then click 'Add'. The Go! website will then appear in the 'Websites' text box.



- 5) Repeat Step 4 for the Girlguiding UK website (<https://www.girlguiding.org.uk>). The Girlguiding UK website will then also appear in the 'Websites' text box.



- 6) Click 'Close' and then 'OK' to save these changes.

You can now access the Members' Area and Go!.